

B series

It's time to **B** properly protected!

With the B-series, we make best-in-class power distribution available to a much wider group of users and applications. It is based on our very successful C-series and incorporates exactly the same circuit-breaker and protection technology used on our larger systems.

Available in a 12-channel and 24-channel version with 16A continuous load capacity and with a variety of output connectors, the B-series puts first class power distribution within everyone's reach.

Rounding out the team, the B-quad is a master distribution unit that, together with the B-12 and B-24, enables larger system to be easily assembled. The B-quad is available in a number of version to suit a variety of preferences and application.



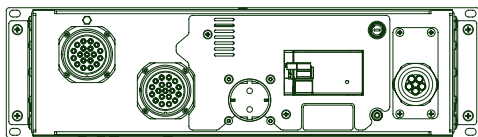


The B12 is a cost effective and versatile power distribution unit suitable for a wide range of applications. It features the same high performance parts and construction as all our other systems. The difference to the C12 is that it omits the metering of incoming power, load monitoring or an integrated web server.

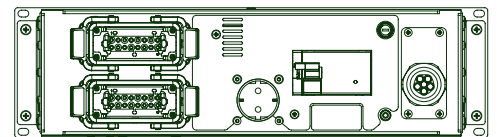
Don't let the size and price fool, this is serious power distribution systems for the most demanding applications, including large LED-display and stage lighting systems.

B12 features:

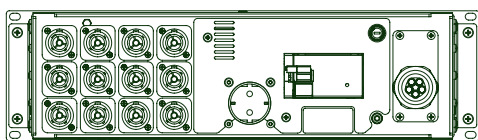
- 12 channels each with 16A capacity.
- RCBO (A-type, 30mA) on each channel.
- High in-rush current capability.
- Loss of neutral protection.
- Selection of output connector types.
- Channel 12 duplicated on separate socket.
- Earth bond connection.
- Fixed power-cable with CEE-plug.
- Emergency stop.
- Phase indicators.
- Rackmount: 19" x 3he (133mm).
- Depth: 329mm.
- Weight: 14kg.
- Full compliance to applicable EN norms.
- CE-certified.



B12A - 1x 2x19-pin Socapex, 6 ch/connector

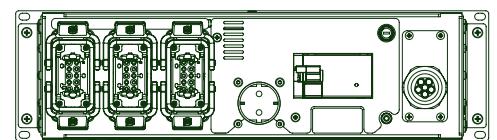


B12A - 2x 2x16-pin Harting, 6 ch/connector



B12A - 5x 12 x Neutrik True1

x = Type of connector for channel 24:
 1 = German Schuko, 2 = French Schuko, 3 = UK
 13A, v4 = Australian GPO, 5 = Swiss



B12A - 7x 3x10-pin Harting, 4 ch/connector

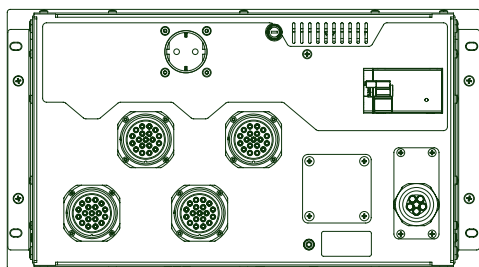


The larger B24 is a flexible power distribution unit aimed at users and applications where the demand for more individual output channel is needed. The B24 gives you the same high performance parts and construction as the B12 but with twenty-four dedicated outputs.

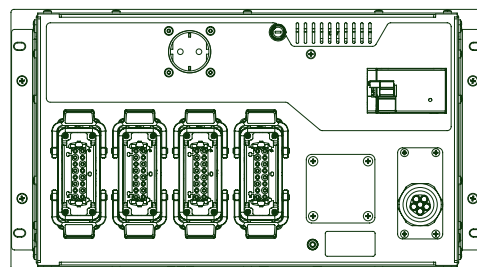
Like the B12 the B24 omits the higher functionality of C-series to create a high-quality power distribution unit for your most demanding applications but in a very accessible price range.

B24 features:

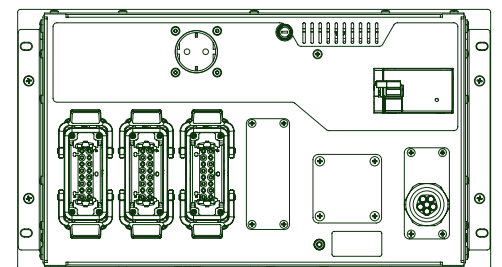
- 24 channels each with 16A capacity.
- RCBO (A-type, 30mA) on each channel.
- High in-rush current capability.
- Loss of neutral protection.
- Selection of of output connector types.
- Channel 12 duplicated on separate socket.
- Earth bond connection.
- Fixed power-cable with CEE-plug.
- Emergency stop.
- Phase indicators.
- Rackmount: 19" x 6he (266mm).
- Depth: 329mm.
- Weight: 17kg.
- Full compliance to applicable EN norms.
- CE-certified.



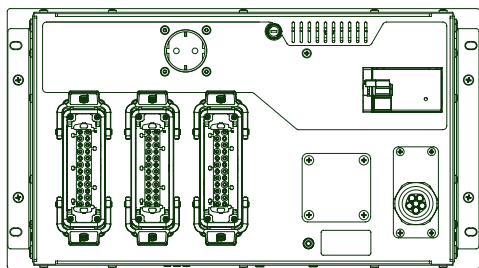
B24A - 1x 4x19-pin Socapex, 6 ch/connector



B24A - 2x 4x16-pin Harting, 6 ch/connector

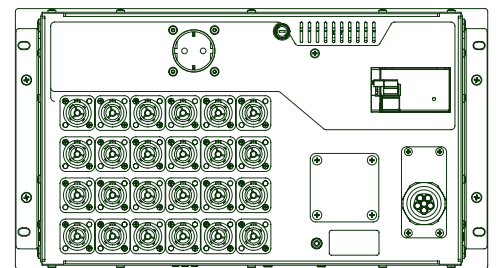


B24A - 3x 3x16-pin Harting, 8 ch/connector



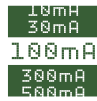
B24A - 4x 3x24-pin Harting, 8 ch/connector

x = Type of connector for channel 24:
 1 = German Schuko, 2 = French Schuko, 3 = UK
 13A, 4 = Australian GPO, 5 = Swiss



B24A - 5x 24 x Neutrik True1

B quad



The **B-quad** is a customizable 3-phase power distribution unit that's well suited to power a wide range of products such as motor controllers, dimmers or indeed other types of power distribution units. When used together with the B12 and the B24, highly cost-effective power distribution systems of up to 96 channels can quickly be assembled.

Standard input is CEE 125A 3-phase with CEE 63A 3-phase as an option. A mains disconnect connects the incoming power to four 3-phase outlets that can be either 16A, 32A or 63A 3-phase CEE connectors. Each of the four outlets is protected by a high performance Hydraulic-Magnetic circuit breaker and each one can be fitted with an adjustable and programmable RCM (earth leakage) protection device.

The optional main energy meter shows all incoming voltages and currents as well as frequency and total energy used over time.

B-quad features:

- CEE 125A 3-phase input (CEE 63A optional).
- Mains disconnect switch.
- Optional main energy meter.
- Hydraulic-magnetic 3p+N circuit breakers.
- Type A RCD protection with adjustable trip level and delay.
- Four CEE 3-phase outlets, selectable 16A, 32A or 63A.
- Harting earth bond connection.
- 19" x 7he (311mm).
- Depth: 411mm.
- Weight: 19 kg.

